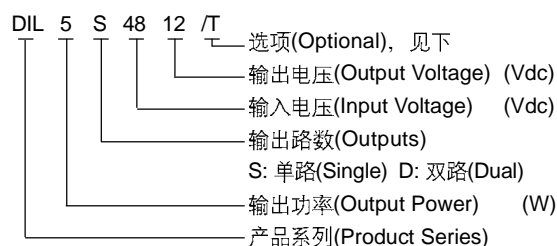




型号定义 (Model Name)



选项(Optional) : /T 表示带 Trim 功能
(/T denotes Trim function)
/L 表示铝外壳
(/L denotes aluminium case)

特点

- * 外形尺寸: 31.8 × 20.4 × 10.7 mm
- * 2: 1 电压输入范围
- * 固定开关频率
- * 六面金属封装

Features

- * Size: 1.25 × 0.80 × 0.42 inch
- * 2: 1 Input Voltage Range
- * Constant Frequency
- * Encapsulated in Metal Cases

输入特性 (Input)

注释 (Notes and Conditions)

输入电压范围 (Input Voltage Range)		
标称 (Nominal) 5Vdc	4.5~9Vdc	15Vdc max
标称 (Nominal) 12Vdc	9~18Vdc	20Vdc max
标称 (Nominal) 24Vdc	18~36Vdc	40Vdc max
标称 (Nominal) 48Vdc	36~72Vdc	80Vdc max

输出特性 (Output)

注释 (Notes and Conditions)

输出电压精度 (Voltage Set-Point Accuracy)	± 1%	V _{inom} and I _{onm}
源效应 (Line Regulation)	V _{o1} : ± 0.2%V _o (V _{o2} : ± 1.5%V _o)	V _{imin} ~V _{imax} , I _{onm}
负载效应 (Load Regulation)	V _{o1} : ± 0.5%V _o (V _{o2} : ± 4.0%V _o)	10%~100%I _{onm} , V _{inm}
输出过流保护点 (Current Limit Threshold Range)	>110%I _o	
短路保护 (Short-Circuit Protection)	连续可恢复 (Continuous, Automatic Recovery)	
瞬态响应 (Dynamic Response)		
过冲幅度 (Peak Deviation)	± 5%V _o	25%-50%-25% of I _{onm}
恢复时间 (Settling Time)	500 μs	and 50%-75%-50% of I _{onm}

一般特性 (General)

注释 (Notes and Conditions)

温度系数 (Temperature Coefficient)	± 0.02%/°C	
隔离电压 (Isolation Voltage)		
输入与输出 (Input-Output)	1000Vdc 1min	
输入与外壳 (Input-Case) ¹	700Vdc (1000Vdc) or 500Vac 1min	
输出与外壳 (Output-Case)	700Vdc or 500Vac 1min	
工作壳温 (Operating Case Temperature)	- 25°C ~ + 85°C	
贮存温度 (Storage Temperature)	- 55°C ~ + 125°C	
冷却方式 (Cooling)	自然冷却 (Natural Convection)	
平均故障间隔时间 (MTBF)	2 × 10 ⁵ h	MIL-HDBK-217
重量 (Weight)	15g	

注: 除非另有说明, 指标一般在标称输入电压、满载和 25°C 环境温度下测得。

Note: All specifications are typical at nominal input, full load at 25°C unless otherwise stated.

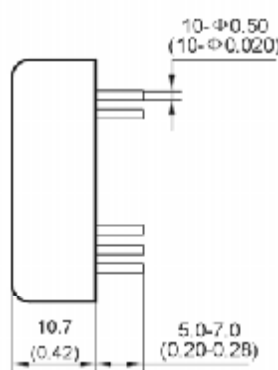
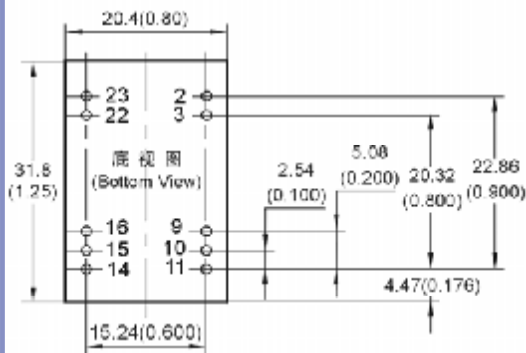
1 DIL-3W系列是1000Vdc 1min(1000Vdc for DIL-3W).

型号列表 (Models)

产品型号 (Model Number)	标称输入电压 (Input Voltage)	标称输出电压 (Output Voltage)	标称负载 (Output Current)	额定输出功率 (Output Power)	效率 (Efficiency)	输出杂音电压峰峰值 (Ripple and Noise)
	Vdc	Vdc	A	W	%	mVp-p
DIL3D0512	5.0	± 12	± 0.125	3	70	100
DIL3D0515	5.0	± 15	± 0.10	3	69	100
DIL5S1205	12	5.0	1.0	5	75	50
DIL5S1212	12	12	0.42	5	78	100
DIL5S243V3	24	3.3	1.5	5	73	50
DIL3S2405	24	5.0	0.6	3	70	50
DIL5S2405	24	5.0	1.0	5	74	50
DIL3S2412	24	12	0.25	3	72	100
DIL5S2412	24	12	0.42	5	75	100
DIL3S2415	24	15	0.2	3	73	100
DIL5S2415	24	15	0.33	5	78	100
DIL3D2405	24	± 5.0	± 0.30	3	75	50
DIL3D2412	24	± 12	± 0.125	3	72	100
DIL5D2412	24	± 12	± 0.21	5	77	100
DIL3D2415	24	± 15	± 0.10	3	75	100
DIL5D2415	24	± 15	± 0.166	5	75	100
DIL5S483V3	48	3.3	1.5	5	73	50
DIL3S4805	48	5.0	0.6	3	71	50
DIL5S4805	48	5.0	1.0	5	75	50
DIL3S4812	48	12	0.25	3	75	100
DIL5S4812	48	12	0.42	5	78	100
DIL3S4815	48	15	0.2	3	79	100
DIL3D4805	48	± 5.0	± 0.30	3	70	50
DIL3D4812	48	± 12	± 0.125	3	70	100
DIL3D4815	48	± 15	± 0.10	3	75	100

安装尺寸 (Mechanical Drawing)

尺寸单位是 mm(英寸); All Dimensions in mm (inches)



引脚定义 (Pin Definition)

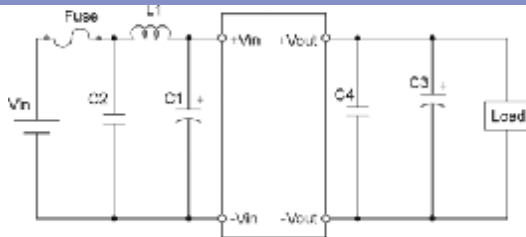
引脚 (Pin)	单路 (Single)	双路 (Dual)
2	-Vin	-Vin
3	-Vin	-Vin
9	N C	COM
10	N C	N C
11	N C	-Vout
14	+Vout	+Vout
15	N C	N C
16	-Vout	COM
22	+Vin	+Vin
23	+Vin	+Vin

未注公差按下表 (Tolerances Unless Otherwise Specified)

mm	inches
.x ±0.5	.xx ±0.02
.xx ±0.13	.xxx ±0.005

注: 对带后缀/T的产品 Pin10 是 Trim 端

应用电路推荐 (Recommended Application Circuit)



温度降额曲线 (Temperature Derating Curve)

